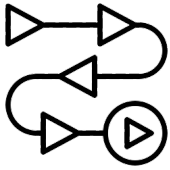


EasyMapper

Lightweight 360° LiDAR System
with UAV integration

Our Services



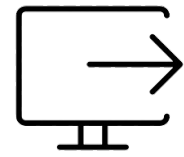
Easy to use and process

Easily operable with an intuitive interface, it processes data quickly and accurately.



360° Surveying & Mapping

With 360° scanning, survey every angle perfectly without missing a single detail.



Safe operational range

Maintain reliable data transmission for uninterrupted operations.

2



Features of EasyMapper

- ✓ Effortless Deployment and Retrieval
- ✓ Drone + Lidar Weight **3.7kg**
- ✓ **C2** Certification

Technical specifications



Drone Specifications

Size 495 × 455 × 286 mm

Weight (incl. LiDAR) 3.7kg

Battery Capacity 12,000mAh

Flight Time (incl. LiDAR) 45 mins

Surveyor Ultra OEM

Laser scanner Hesai XT32M2X

AGL Altitude 140m

Precision 3cm

Accuracy 2.5cm

Range Up to 300m

RGB camera Built-in 8MP

Mapper+ OEM

Laser scanner Livox AVIA

AGL Altitude 70m

Precision 4cm

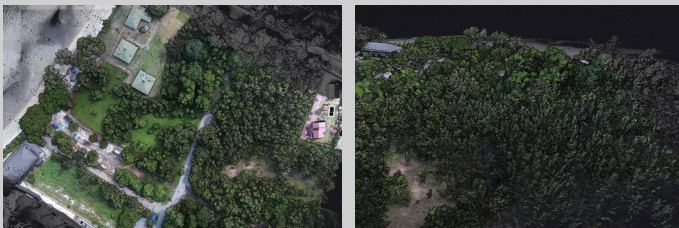
Accuracy 4cm

Range Up to 230m

RGB camera Built-in 8MP

Tools for Shaping the Future

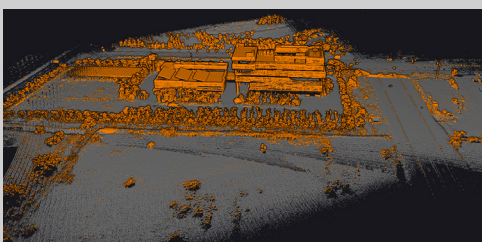
Diverse Applications of Mapping Drones



Point Cloud



Object Dimension Analysis



Ground Classification



Removal of Non-Ground Objects